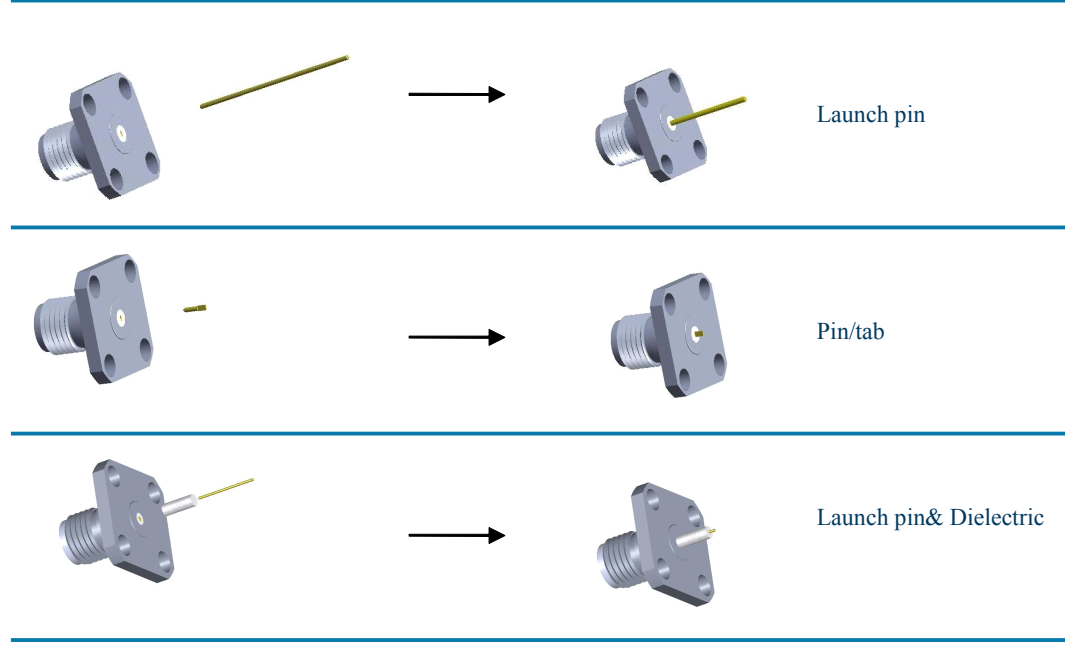




 Combination Type Connectors

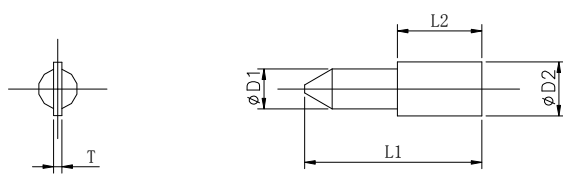
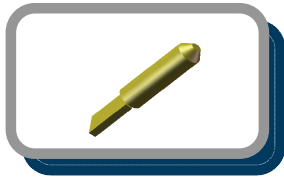
MicrowaveTown combination connector is a combination of a replaceable connector and a launch pin. The designer can make up several combinations into what he need by standard Microwave Town products.

Configuration:



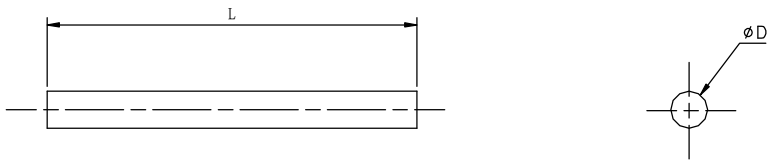


1. Pin/Tab



PN	D1	D2	L1	L2	T
L10S36	0.91mm/0.036 "	1.27mm/0.05 "	4.2mm/0.165 "	2mm/0.079 "	0.2mm/0.008 "
L10S20	0.51mm/0.020 "	0.6mm/0.024 "	2.8mm/0.110 "	1mm/0.04 "	0.15mm/0.006 "

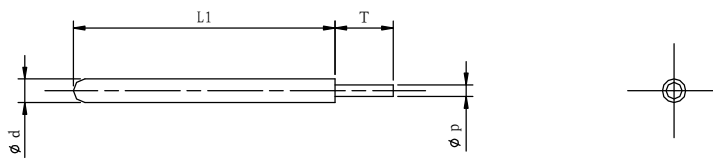
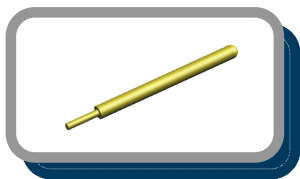
2. Launch Pin



PN	L04S20	L03S20	L04S18	L03S18	L04S15	L03S15	L04S12	L03S12
L	7.5mm/0.295"	6.5mm/0.256"	7.5mm/0.295"	6.5mm/0.256"	7.5mm/0.295"	6.5mm/0.256"	7.5mm/0.295"	6.5mm/0.256"
D	0.51mm/0.02 "		0.46mm/0.018"		0.38mm/0.015"		0.30mm/0.012"	

Note: the standard hold depth of Allwin SMA\2.92mm\2.4mm\SSMA replaceable connector is 2mm, and N/TNCA replaceable connector is 2.5mm.

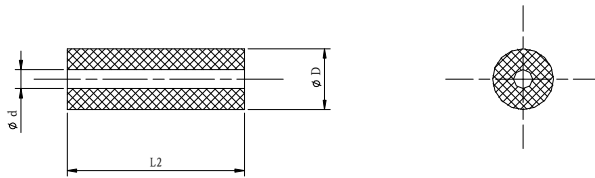
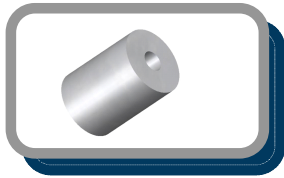
3. Step Launch Pin



d	0.51mm/0.02 "	
p	0.254mm/0.01"	
L1	4.1mm/0.160"	5.7mm/0.225"
T	1.27mm/0.05"	
PN	L05S20A	L06S20A

Note: the standard hold depth of Allwin SMA\2.92mm\2.4mm\SSMA replaceable connector is 2mm, and N/TNCA replaceable connector is 2.5mm.

4. Dielectric



D	1.67mm/0.066 "			
d	0.51mm/0.02 "			
L2	3mm/0.118"	4mm/0.158"	3.18mm/0.125"	4.75mm/0.187"
PN	J03S20	J04S20	J05S20	J06S20